



PELCO
by Schneider Electric



Imaging Systems

Cameras and Lenses

- **General Purpose**
 - Controlled Lighting
 - 540 TVL High Resolution
 - Light Levels Above 1 Lux
 - Normal Lighting Conditions
 - Applications: Well-lit Classrooms, Offices, Shopping Malls



- **Low Light**

- Day and Night / DSS

- Light Levels Below 1 Lux
 - Color Video Image During the Day, Monochrome Image at Night for Increased Light Sensitivity Color Image Low Light Sensitivity, down to .01 Lux
 - Applications: Parking Lots, Businesses, Receiving Areas



- **Extreme Lighting**

- Wide Dynamic Range

- Dark and Light Areas in a Scene
- Extreme Sunlight or Backlight
- Glare and Reflective Light Correction
- Day/Night Options
- Applications include: Lobbies, Shipping Docks, Glass Front Sites, High Gloss Floors, Bright Accent Lighting



Camera Overview

- Indoor Box Design
- Deterrent
- C/CS Lens mount for larger lenses
- Low Profile Top/Bottom Mount
- Fits Into Pelco Enclosure or Domes for Outdoor Use
- On Screen Menus
- Multiple Lens Options
- Multiple Mounting Options



General Purpose	Low Light	Day/Night Wide Dynamic Range (WDR)
<ul style="list-style-type: none">▪ Compact C10CH Series▪ CC3701 Series	<ul style="list-style-type: none">▪ CC3751 Series▪ C10DN Series▪ CCC1390 Day/Night Series	<ul style="list-style-type: none">▪ Compact CCC1390 Series

- **Lens Options**

- Varifocal: 1–3, 2.5–6, 2.8–12, 3–8, 5–40, 5–50, 5.5–82.5mm
- IR Corrected Varifocal: 3–8.5, 7.5–50mm
- Fixed: 2.3, 2.8, 4, 8mm

- General Purpose
 - CC3701 Series
 - Color High Resolution (480 TVL)
 - 1/3" Sony SuperHAD™
 - Digital Signal Processing
 - Superior Color Accuracy
 - EDR (Extended Dynamic Range)
 - 24VAC/12VDC Power
 - 5 Year Warranty



- **General Purpose**

- **C10CH Series**

- Color High Resolution (540 TVL)
 - 1/3" CCD Imager
 - Digital Signal Processing
 - 0.3 Lux
 - Compact Body Style
 - Fits in DF5 (5") Domes and all Enclosures
 - On Screen Menu Configuration with Side Joystick
 - Flickerless Mode
 - Eclipser Function for extreme back light
 - Autosensing 24VAC/12VDC Power
 - Long Distance Cable Compensation
 - 230 VAC Model
 - 3 Year Warranty



- LowLight
 - CC3751 /CC3651 Series
 - Color LowLight™ Technology
 - Extended Digital Slow Shutter (DSS)
 - 1/3" CCD Imager
 - Color High Resolution (480TVL)
 - 24 VAC/12VDC Power
 - Backlight Compensation
 - Minimum Illumination 0.01 lux
 - 5 Year Warranty



- LowLight
 - C10DN Series
 - Day/Night High Resolution (540 TVL)
 - 1/3" CCD Imager
 - Digital Signal Processing
 - 0.07 Lux
 - 4 Preset Application Profiles
 - Compact Body Style
 - Fits in DF5 (5") Domes and all Enclosures
 - On Screen Menu Configuration with Side Joystick
 - Flickerless Mode
 - Eclipse Function for extreme back light
 - Autosensing 24VAC/12VDC Power
 - Long Distance Cable Compensation
 - 230 VAC Model
 - 3 Year Warranty



- Day Night Wide Dynamic Range
 - CCC1390 Series
 - Day/Night High Resolution (480 TVL)
 - WDR 60dB
 - 1/3" CCD Imager
 - Digital Signal Processing
 - 0.002 Lux
 - 4 Preset Application Profiles
 - Compact Body Style
 - Fits in DF5 (5") Domes and all Enclosures
 - On Screen Menu Configuration with Side Joystick
 - Flickerless Mode
 - Electronic PTZ
 - Autosensing 24VAC/12VDC Power
 - Data compatible with Pelco P and D Protocol
 - 3 Year Warranty





PELCO
by Schneider Electric



Imaging Systems

Camclosures (Mini Domes, Wedge, & Bullet)
Integrated Camera Systems

Camclosure IS Overview

PELCO
by Schneider Electric

- Fully Integrated Enclosure, Camera, and Lens
- Discreet Design
- Mini Domes, Wedge, and Bullet Design Enclosures
- Easy manual Pan/Tilt/Rotation Adjustment
- Pixel-Based WDR Imager Technology
- Installation Flexibility UTP & BNC standard
- Video Service Jack



Camclosure IS Enclosure



- IS90 Series – Indoor Mini Dome
 - Single Model for Surface Mount and Recessed Ceiling Applications
 - Includes Clear Bubble with Liner ***and*** Smoked Bubble
 - White or Black Finish



- IS110 / 111 Series – Surface Tamper Resistant
 - NEMA4X & IP66 Rated for Outdoor Use
 - High Impact
 - Heater Thermostatically Controlled
 - Clear Bubble with Liner (IS111) or Smoked Bubble (IS110)



- IS150 / 151 Series – In Ceiling Tamper Resistant
 - NEMA4X & IP66 Rated for Outdoor Use
 - High Impact
 - Heater Thermostatically Controlled
 - Clear Bubble with Liner (IS151) or Smoked Bubble (IS150)
 - Includes Adapter Plate for 4S electrical box

- **IS210 Series – Wedge Tamper Resistant**



- NEMA4X & IP66 Rated for Outdoor Use
- High Impact
- Heater Thermostatically Controlled
- Low Profile for Corners, Easements, and Staircases.

- **IS310 Series – Bullet Tamper Resistant**



- NEMA4X & IP66 Rated for Outdoor Use
- High Impact
- Heater Thermostatically Controlled

General Purpose	Low Light	Wide Dynamic Range (WDR)
<ul style="list-style-type: none">▪ Color (540 TVL) High Resolution▪ Color (330 TVL) Standard Resolution available in ICS series	<ul style="list-style-type: none">▪ Day/Night (540) High Resolution▪ Day/Night WDR (504 TVL)▪ Color DSS (480) Resolution in ICS series	<ul style="list-style-type: none">▪ Day/Night WDR (504 TVL)▪ Color WDR (504 TVL) Resolution

- **Lens Options**

- 3–9.5mm & 9–22mm Auto Iris Varifocal
- 3, 3.6, 6, 8, 12mm Fixed Iris



PELCO
by Schneider Electric



Imaging Systems

Camclosure IP and IP Cameras

Camclosure IP & IP3701 Overview

PELCO
by Schneider Electric

- High Resolution at Full Frame Video
- Open Architecture for Systemization
- Installation Flexibility
 - Camclosure IP
 - 3 Enclosure Options
 - 8 Optics Packages
 - IP3701 Series
 - Traditional Box camera CS Mount Lens
 - Color High Resolution Optics



- Surface mount enclosure
- In-ceiling and pendant mount adapters
- NEMA4X & IP66
- Thermostatically controlled heater
- Tamper resistant
- Smoked or clear bubble with liner
- PoE (Power over Ethernet) & 24VAC



ALL Interchangeable

General Purpose	Low Light	Wide Dynamic Range (WDR)
<ul style="list-style-type: none">▪ Color High Resolution 4CIF	<ul style="list-style-type: none">▪ Day/Night High Resolution 4CIF▪ Day/Night WDR High Resolution 4 CIF	<ul style="list-style-type: none">▪ Day/Night WDR High Resolution 4 CIF▪ Color WDR High Resolution 4 CIF

- **Lens Options**

- Varifocal: 3-9.5mm and 9-22mm

General Purpose

- Color High Resolution 4CIF
- Minimum Illumination 0.5 lux
- Simultaneous Analog Video via BNC

- **Lens Options**

- Varifocal: 1–3, 2.5–6, 2.8–12, 3–8, 5–40, 5–50, 5.5–82.5mm
- IR Corrected Varifocal: 3–8.5, 7.5–50mm
- Fixed: 2.3, 2.8, 4, 8mm

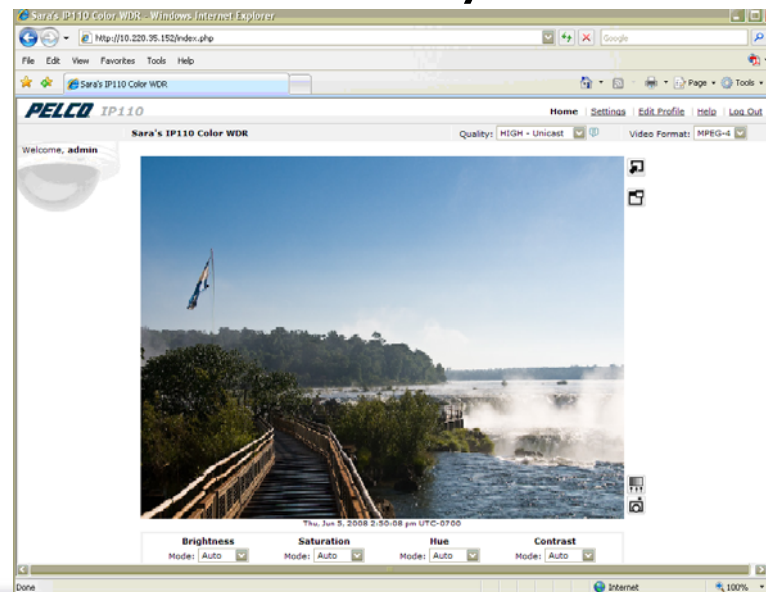
Camclosure IP & IP3701 Systemization

- 3 Simultaneous video streams: Dual MPEG4, Single MJPEG
 - Keep your recording and viewing at 30ips 4CIF or
 - Scale down your recording stream or
 - Scale down your web browser stream or
 - Only use the recording stream for better bandwidth efficiency.



Camclosure IP & IP3701 Systemization

- View and configure via standard web browser
 - Change camera or network settings
 - Add users
 - Take a snap shot and email it
 - View multiple cameras on your desktop



Camclosure IP & IP3701 Systemization

- Endura Enabled
- Compatible with Digital Sentry
- Open architecture via Pelco IP API
 - Download free on www.pelco.com
- API Partners

(For the most updated list <http://www.pelco.com/xportal/ippartners.aspx>)

- Cisco
- GriffidBV
- Milestone
- ONSSI
- Qeeps
- Codestuff
- OV Object Video





PELCO
by Schneider Electric



Imaging Systems

Power Supplies

Power Supplies

- TF Series
 - 24 VAC ideal for indoor fixed cameras
 - 20 or 50 VA Single Output
- MCS*E
 - Economical alternative to MCS up to 16 outputs from single source
 - 120 VAC input, 24 VAC output
 - 2, 5, 10, or 20 amp capacities
- MCS
 - 120 VAC input, 24 VAC output
 - 2, 5, 10, or 20 amp capacities
 - Fuse or Circuit Breaker Protection



- **WCS Outdoor Rated Enclosure**
 - 120 VAC or 240 VAC selectable input
 - 24 VAC or 28 VAC selectable output
 - 4 or 20 amp capacities
 - Up to 4 outputs
- **RCS 1 Rack Unit Fits Standard 19" EIA Rack**
 - 115 VAC or 230 VAC selectable input
 - 26 VAC output
 - 8, 16, or 32 Output models
 - 5, 10, or 20 amp capacities
 - Breaker and Fuse models

