

The New Digital Sentry

Chris Haun, Product Manager

Yvonne Schwemmer, Product Marketing Manager

Session Logistics

- Voice for this session, will be broadcast by Voice over IP
- If VoIP is not available in your location, please dial the number and access code included in your web confirmation email
- Please familiarize yourself with the session tools on the right side of your webinar session
- Submit questions throughout session – Q&A will be published with the recorded session

Welcome ...

*Russia UK New Zealand USA China Sweden Bahrain Lebanon UAE
South Africa Netherlands Romania Belgium Germany Poland El Salvador
Spain Canada Mexico Costa Rica Egypt Venezuela Spain Canada Egypt
Costa Rica Colombia Taiwan Vietnam Thailand China Malaysia Latvia
Serbia Kuwait Turkey Pakistan Finland Jordan Romania Portugal
Trinidad and Tobago Oman Cameroon Israel Belarus France
Qatar Bahrain Yemen Philippines Cyprus Ireland Chile Denmark India
New Zealand Panama Saudi Arabia Peru Azerbaijan Indonesia Peru
Panama Azerbaijan Indonesia Norway Panama Argentina
Italy Azerbaijan Indonesia Norway Tunisia Niger Greece*

Session Logistics

- Voice for this session, will be broadcast by Voice over IP
- If VoIP is not available in your location, please dial the number and access code included in your web confirmation email
- Please familiarize yourself with the session tools on the right side of your webinar session
- Submit questions throughout session – Q&A will be published with the recorded session

Welcome to...

*Russia UK New Zealand USA China Sweden Bahrain Lebanon UAE
South Africa Netherlands Romania Belgium Germany Poland El Salvador
Spain Canada Mexico Costa Rica Egypt Venezuela Spain Canada Egypt
Costa Rica Colombia Taiwan Vietnam Thailand China Malaysia Latvia
Serbia Kuwait Turkey Pakistan Finland Jordan Romania Portugal
Trinidad and Tobago Oman Cameroon Israel Belarus France
Qatar Bahrain Yemen Philippines Cyprus Ireland Chile Denmark India
New Zealand Panama Saudi Arabia Peru Azerbaijan Indonesia Peru
Panama Azerbaijan Indonesia Norway Panama Argentina
Italy Azerbaijan Indonesia Norway Tunisia Niger Greece*

The New Digital Sentry

Chris Haun, Product Manager

Yvonne Schwemmer, Product Marketing Manager

The New Digital Sentry
Simplified. Optimized.
More powerful than ever.



Digital Sentry

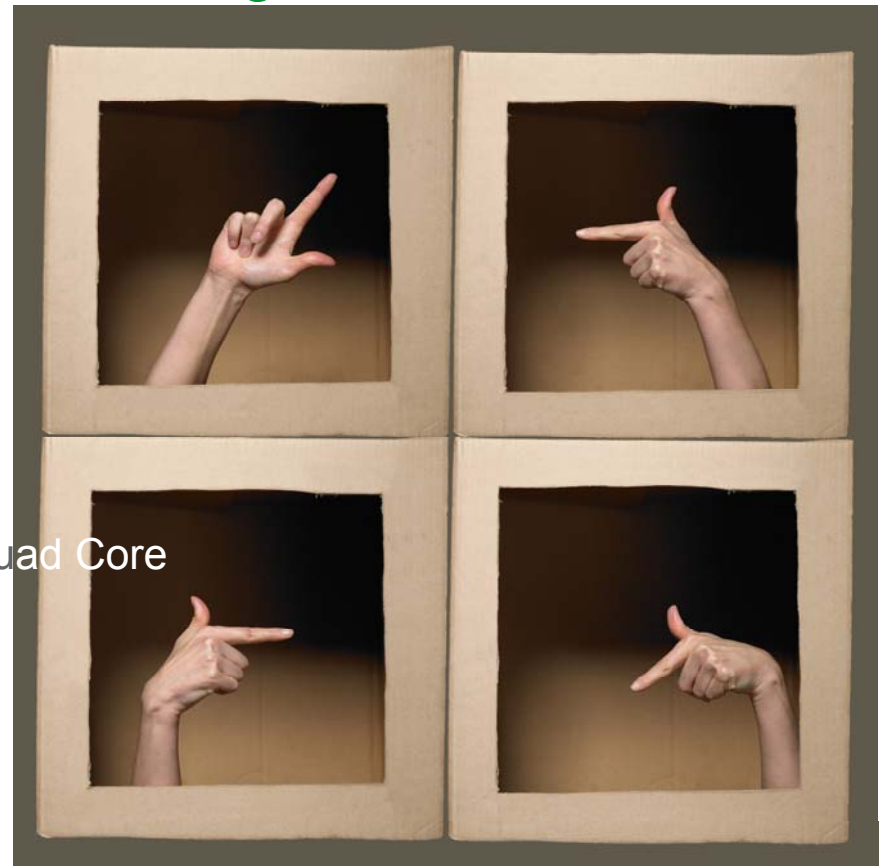
Problems Customers Face

- **Inadequate capabilities for HD recording**

- # of cameras
 - How many analog? How many IP?
 - SD versus HD (Megapixel)
- Available throughput
 - Unspecified
 - 4, 32, 60, 72 Mbps
- Processor specs
 - Unspecified
 - Intel Dual Core, Intel i3 Core, Xeon Quad Core

- **No one point of support**

- Hardware from one vendor
- Software from another



What is The New Digital Sentry?

- New Network Video Recorder



- New 16-Channel H.264 Analog Encoder



- New DS NVs



The New Digital Sentry Network Video Recorder

- Replaces **ALL** existing DS HVR & NVR products
 - No training certification required. No barriers to entry.
- 280 Mbps
- Supports up to 128 Channels
 - NVR = All IP
 - DVR = Up to 64 analog
 - Hybrid NVR = Up to 64 direct-attached analog
- Dual Gigabit Ports
- Optimized Cooling



PELCO
by Schneider Electric

The New Digital Sentry Network Video Recorder

- Pre-loaded with Win 7/64-Bit
- Pre-loaded with DS NVs
- Includes 4 **Free** IP Licenses (Pelco & 3rd Party!)
- New Front Panel
- Front-accessible Drives
- 2 RUs
- Ships with Rackmount Kit



Rack Mounted



The New Digital Sentry Maximum Power for HD Video

- **i7 2nd-Generation Quad Core Processor**
 - 280 Mbps! Previously 60 Mbps
 - Video display
 - Server-side motion
- **Onboard Intel HD Graphics (Sandy Bridge)**
 - Improved architecture
 - No more memory leaks
- **8 GB RAM**
 - Supports DS NVs and CP
- **Dual DVI-D**
 - Supports ControlPoint on the server
 - Max resolution 1920x1200



The New Digital Sentry Maximum Storage for HD Video

- **High-Capacity, High-Performance**

- 500 GB or
- 6 Drive Bays x 3 TB enterprise drives
 - 3, 6, 9, 12, 15, 18 TB Models (to 12 TB for ODD Models)

- **Internal**

- RAID 5 with optional RAID5 controller, hot swappable drives
- Non RAID5 = 37 MBps; RAID5 = 34 – 37 MBps write time
- Minimum RAID5 configuration = 9 TB (one drive for parity)

- **External**

- DS-SRV-SCSI supports optional DX8100HDDI, to 24 TB
- NAS supported

- **Export Media**

- Optional DVD
- 5 USB Ports (2, 3.0, 3, 2.0)



The New Digital Sentry Analog / Hybrid Capability

- ENC5416, H.264 Analog Encoder
 - Exclusive for DS SRV
 - Field installable
- 16 Channels per Encoder
- 16 Looping, Auto-terminated Outputs
- Maximum 4 Encoders, 64 Analog Channels per Server
- 30/25 (NTSC/PAL) at D1 Per Channel
- Per Encoder
 - 16 Alarm inputs/16 Relays out
 - 16 Audio inputs



The New Digital Sentry Analog / Hybrid Capability

- ENC5400- capture card inside the NVR
 - ENC5400-2PORT – supports up to two ENC5416s
 - ENC5400-4PORT – supports up to four ENC5416s
 - No upgrades available from -2PORT
 - Direct-attached to server via supplied cables
- PTZ Support
 - Pelco P&D Supported
 - RS422/485
 - 3rd Party PTZ
- Ideal for DVR replacements
- Pelco and 3rd Party Network Encoders Also Supported

The New Digital Sentry DS NVs

- Version 7.2.X
 - ONVIF Support
 - DS IP Driver Support – 19 manufacturers, over 290 models
 - KBD5000 Support
- DS is software; existing integrations are not affected
- New DSSI – Digital Sentry System Information
 - SNMP support
 - Recently added HTML reports



Digital Sentry System Information (DSSI)

Digital Sentry System Information

System Overview

CPU Usage:	75.25%
Memory Usage:	74.88%
Board Temperature:	Unavailable
Battery/UPS:	None
Estimated Charge:	100%
Remaining Time:	Inactive
Overall Status:	OK

Status Details: Unable to communicate with front panel service. Some information may not be available

Network Information

Primary:	Marvell Yukon 88E8001/8003/8010 PCI Gigabit Ethernet Controller
Status:	Up
Speed:	1,000Mbps
Activity:	0.01Mbps
Secondary:	Intel(R) PRO/1000 PL Network Connection
Status:	Down
Speed:	1,000Mbps
Activity:	0.00Mbps

Software Information

Service:	mssql\$DS_MSSQLSERVER
Status:	Not Found
Service:	DSVideoServer
Status:	Not Found

Drive Information:

Drive #1	Drive #3	Drive #5
Drive Status: OK	Drive Status: Not Found	Drive Status: Not Found
Capacity: 232.88GB	Capacity: 0.00GB	Capacity: 0.00GB
Available: 163.73GB	Available: 0.00GB	Available: 0.00GB
Used: 69.15GB	Used: 0.00GB	Used: 0.00GB
Write Speed: 0.03MB/sec	Write Speed: 0.00MB/sec	Write Speed: 0.00MB/sec

Drive #2	Drive #4	Drive #6
Drive Status: OK	Drive Status: Not Found	Drive Status: Not Found
Capacity: 698.64GB	Capacity: 0.00GB	Capacity: 0.00GB
Available: 231.12GB	Available: 0.00GB	Available: 0.00GB
Used: 467.52GB	Used: 0.00GB	Used: 0.00GB
Write Speed: 0.00MB/sec	Write Speed: 0.00MB/sec	Write Speed: 0.00MB/sec

DSSI

The screenshot shows a Windows desktop with the DS ControlPoint application open. The application window is titled 'DS ControlPoint' and features a 'Live' view of an IP camera. The camera feed area shows a blue screen with the text 'No Video'. Below the feed is an alarm log table.

System Information (from System Information window):

System Overview		Network Information	
CPU Usage:	10.07%	Primary:	Intel(R) 82579LM Gigabit Network Connection
Memory Usage:	36.10%	Status:	Up
Board Temperature:	70.16F/21.20C	Speed:	1.000Mbps
Battery/UPS:	None	Activity:	3.95Mbps
Estimated Charge:	100%	Secondary:	Intel(R) 82583V Gigabit Network Connection
Remaining Time:	Inactive	Status:	Down
Overall Status:	Warning	Speed:	0Mbps
Status Details:	Software Error: Problems communicating with IP camera id 120	Activity:	0.00Mbps

DS ControlPoint Live View:

IP Camera - IX30DN-2

No Video

Alarm Log Table:

Name	Camera	Description	Start Time	End Time	System	Type	Frame Count
Clear	IP Camera - IX30DN-2	Problems communicating with IP camera id 120	8/15/2011 6:36:13 AM	8/15/2011 6:36:13 AM	DSSRVCH	Critical	0

DS ControlPoint

Live Systems

Live

In Live mode you can watch live sources of data.

Groups

Systems

- PC
- 1BD1CAM01
- 1BD1CAM02
- 1BD1CAM03
- 1BD1CAM04
- 1BD1CAM05
- 1BD1CAM06
- 1BD1CAM07
- 1BD1CAM08
- 1BD1CAM09
- 1BD1CAM10
- 1BD1CAM11
- 1BD1CAM12
- 1BD1CAM13
- 1BD1CAM14
- 1BD1CAM15
- 1BD1CAM16
- 1BD2CAM01
- 1BD2CAM02
- 1BD2CAM03
- 1BD2CAM04
- 1BD2CAM05
- 1BD2CAM06
- 1BD2CAM07
- 1BD2CAM08
- 1BD2CAM09
- 1BD2CAM10
- 1BD2CAM11
- 1BD2CAM12
- 1BD2CAM13
- 1BD2CAM14
- 1BD2CAM15
- 1BD2CAM16
- 1BD3CAM01
- 1BD3CAM02
- 1BD3CAM03
- 1BD3CAM04
- 1BD3CAM05
- 1BD3CAM06

Tours

Resource Monitor

File Monitor Help

Overview CPU Memory Disk Network

CPU 89% CPU ... 102% Ma...

Image	PID	Descr...	Status
System	4	NT K...	Run...
DSControlPointS.exe	1364	DS C...	Run...
IAStorDataMgrSvc...	1644	IASTo...	Run...
DSVideoServer.exe	2220	Digit...	Run...
System Interrupts	-	Defe...	Run...
dwm.exe	2824	Desk...	Run...
svchost.exe (secsvc)	4008	Host ...	Run...
services.exe	540	Servi...	Run...

Disk 17 MB/se... 16% High...

Network 36 Mbps ... 0% Netw...

Memory 0 Hard Fa... 30% Used...

Views

CPU 100%

60 Seconds

Disk 100 MB/sec

Network 100 Mbps

Warning

CPU usage has increased beyond the recommended threshold. Current: 83.36% Recommended: 80.00%

1.94 MB/s 9:22:13 AM

9:22 AM 8/25/2011

Front Panel & Front Accessible Drives



From this....

3390-00682 3390-00687 3390-00681
 3590-00961 AUS 2-10L CM-DSF161000
 DSF161000 CM-DSF162000 DSF162000
 CM-DSF16500 DSF16500 CM-
 DSF321000 DSF321000 CM-DSF322000
 DSF322000 CM-DSF32500 DSF32500
 35401V2C4D0SH 3590-10140-CZ 3590-
 10140-DE 3590-10140-DK 3590-10140-
 EG 3590-10140-ES 3590-10140-EU 3590-
 10140-FI 3590-10140-FR 3590-10140-GB
 3590-10140-IT 3590-10140-LB 3590-
 10140-NL 3590-10140-NO 3590-10140-PL
 3590-10140-PT 3590-10140-SE 3590-
 10140-US 3590-10143-FI 3590-10143-EU
 3590-10143-GB 3590-10143-IT 3590-
 10143-PT 3590-10141-CZ 3590-10141-DE
 3590-10141-DK 3590-10141-EG 3590-
 10141-ES 3590-10141-EU 3590-10141-FI
 3590-10141-FR 3590-10141-GB 3590-
 10141-IT 3590-10141-LB 3590-10141-NL
 3590-10141-NO 3590-10141-PL 3590-
 10141-PT 3590-10141-SE 3590-00932
 3590-01067A 3590-01068A 3590-01067
 3590-01068 3512-10003-X 3512-10003
 CM-3512-10003 3558-10004 CM-3558-
 10004 CM-3556-10001 CM-3556-10002
 3556-10002 CM-3558-10001 3556-10004
 CM-3556-10004 CM-3558-10002 3552-
 10002 3552-10004 3590-00989 3590-
 10110-US 3590-10110-DK 3590-10110-FI
 3590-10110-FR 3590-10110-DE 3590-
 10110-GB 3590-10110-IT 3590-10110-NO
 3590-10110-PL 3590-10110-PT 3590-
 10110-ES 3590-10110-SE 3590-10143-CZ
 3590-10143-DK 3590-10143-ES 3590-
 10143-FR 3590-10143-NL 3590-10143-SE
 3590-10143-US CM-DSNVR042000 3590-
 10142-NL 3590-10142-CZ 3590-10142-DE
 3590-10142-DK 3590-10142-EG 3590-
 10142-ES 3590-10142-EU 3590-10142-FI
 3590-10142-FR 3590-10142-GB 3590-
 10142-IT 3590-10142-LB 3590-10142-NO
 3590-10142-PL 3590-10142-PT 3590-
 10142-SE 3590-10142-US 3590-10144-IT
 3590-10144-US 3590-10144-PL 3590-
 10144-ES 3590-10144-SE 3590-10144-FI
 3590-10144-GB CM-DSD161000



to this...



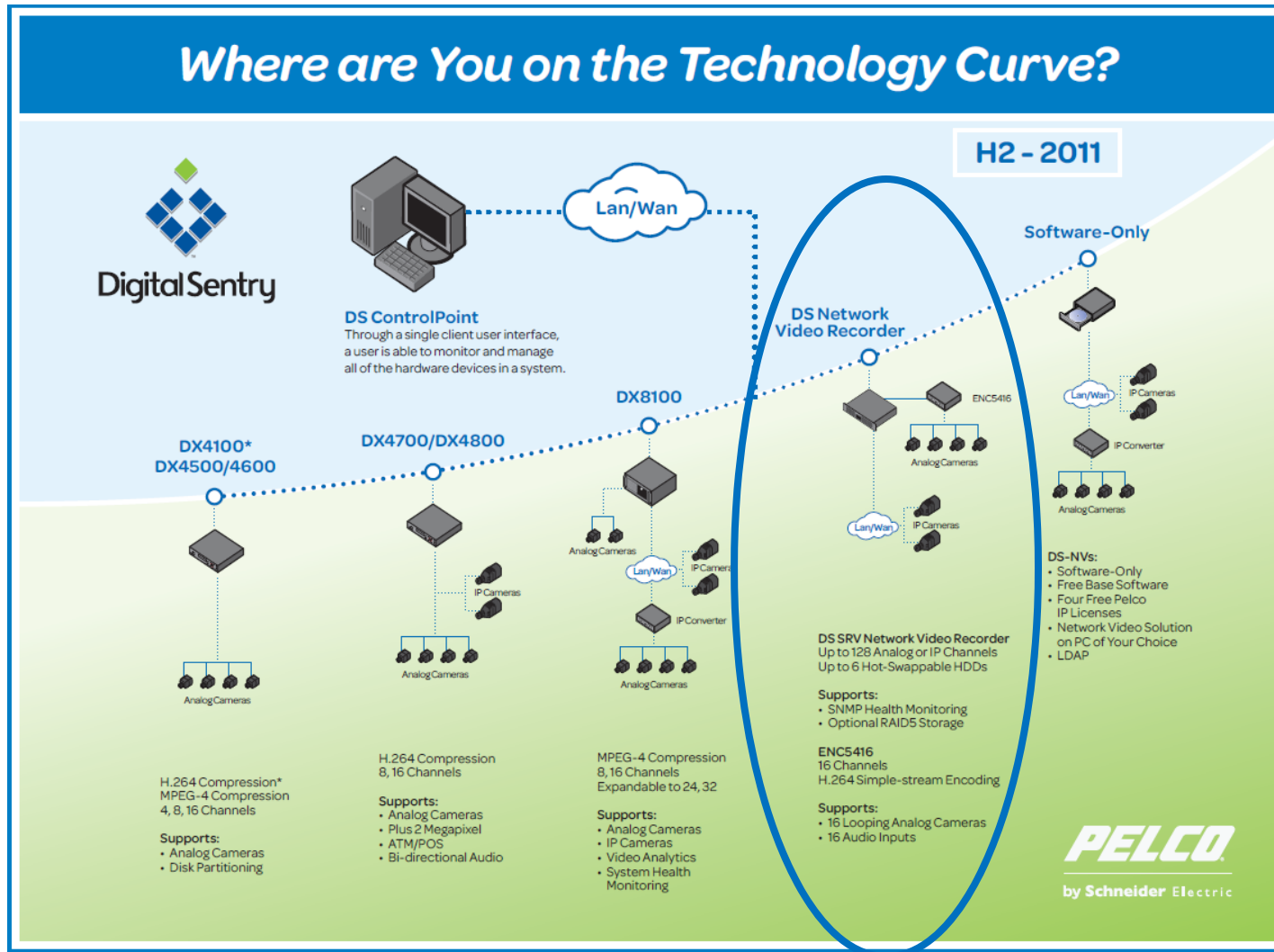
DS SRV
Network Video Recorder
280 Mbps, 2 RU
Up to 128 Channels
Internal RAID5 Option
4 to 6 hot-swappable drives



ENC5416
H.264 Encoder
4CIF/30FPS per input
H.264 Compression
16ch / 1 RU
NVR-Direct Connect

DSSRV-005
DSSRV-030
DSSRV-060
DSSRV-090
DS SRV-120
DS SRV-180
DS SRV-005DVD
DS SRV-030DVD
DS SRV-060DVD
DS SRV-090DVD
DS SRV-120DVD
ENC5416
ENC5400-2PORT
ENC5400-4PORT
DS SRV-RAID
DS SRV-SCSI

The New Digital Sentry



DS NVs Product Roadmap

● DS NVs Q4

- Pelco analytics
- Thumbnail search
- PSIA support added
- Archive Utility to be included
- Motion setup in Control Point

● H1 2012

- Mobile client
- Mapping

● Other features? Let us know! Survey.

Pelco Analytics



- Abandoned Object
- Adaptive Motion
- Auto Tracking (on Spectra HD only)
- Camera Sabotage
- Directional Motion
- Loitering Detection
- Object Counting
- Object Removal
- Stopped Vehicle detection



What is the New Digital Sentry

- Simplified
- Optimized
- More Powerful than Ever!

Cost of Ownership (COO)

- Competitive Storage Prices
- Cost of Support
- OpEx versus CapEx

Last Time Buys

- Only current DS hardware will be made Obsolete (OBS)
 - Target date October 15, 2011 for orders
 - Ship by date December 15, 2011

Product Introduction Timetable

- ASIS Introduction – September
- Design Tools
 - New HTML calculator / bandwidth utilization chart
 - CAD drawings
 - A&E specs
- Training
 - New online tutorials
 - Field training, new class-based materials
- Limited Production Units – October/November
 - First orders accepted October 1
- General Availability – November/December

See us at ASIS in Orlando to see more...

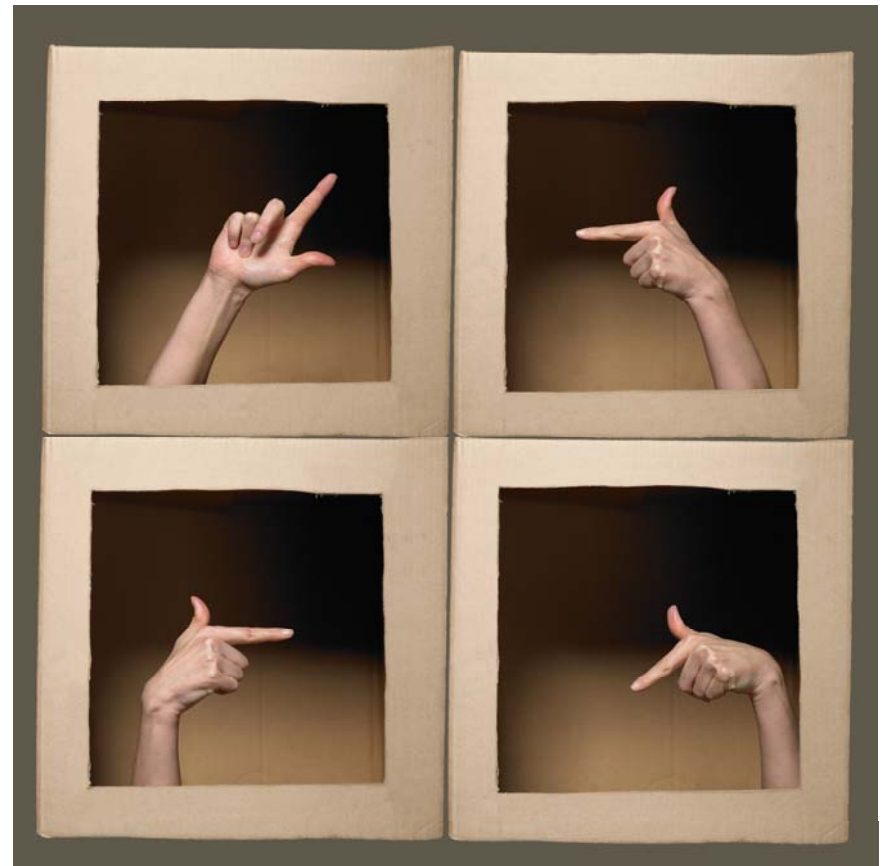
- Surevision
- Sarix TI
- DX47/4800
- The New Digital Sentry
- Integration with Feeling Software's ProDesign 3D
- Visit us at Booth # 547

Problems The New Digital Sentry Solves

- Power for HD recording

- # of cameras
 - 128 IP streams
 - Up to 64 analog
- Available throughput
 - 280 Mbps
- Processor specs
 - 17 2nd-Generation, Quad Code

- One point of support



?S